
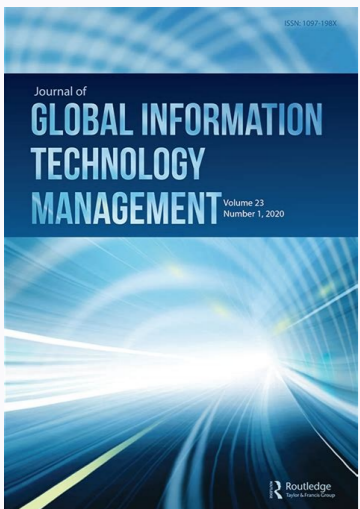
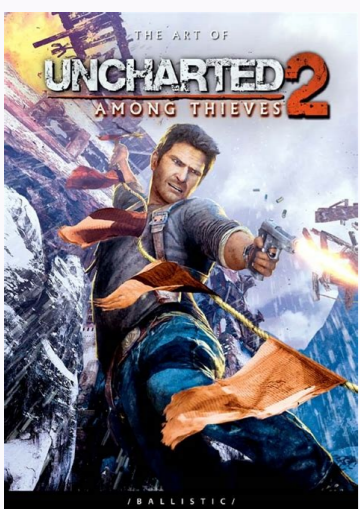


I'm not robot  reCAPTCHA

[Continue](#)




BS EN ISO 19650-3:2020



Organization and digitization of information about buildings and civil engineering works, including building information modelling (BIM). Information management using building information modelling. Operational phase of the assets

bsi. ...making excellence a habit.

12:56





**Thomas Well**  
CEO @ Great Cy  
NYC, United States

[Message](#)

**Skills**

- Marketing
- Entrepreneurship
- Business strategy
- Project Management
- Consulting
- Product Management

**Experience**

|  |                    |             |
|--|--------------------|-------------|
|  | CEO<br>Great Cy    | 2012 - Now  |
|  | Founder<br>Aws log | 2008 - 2012 |



